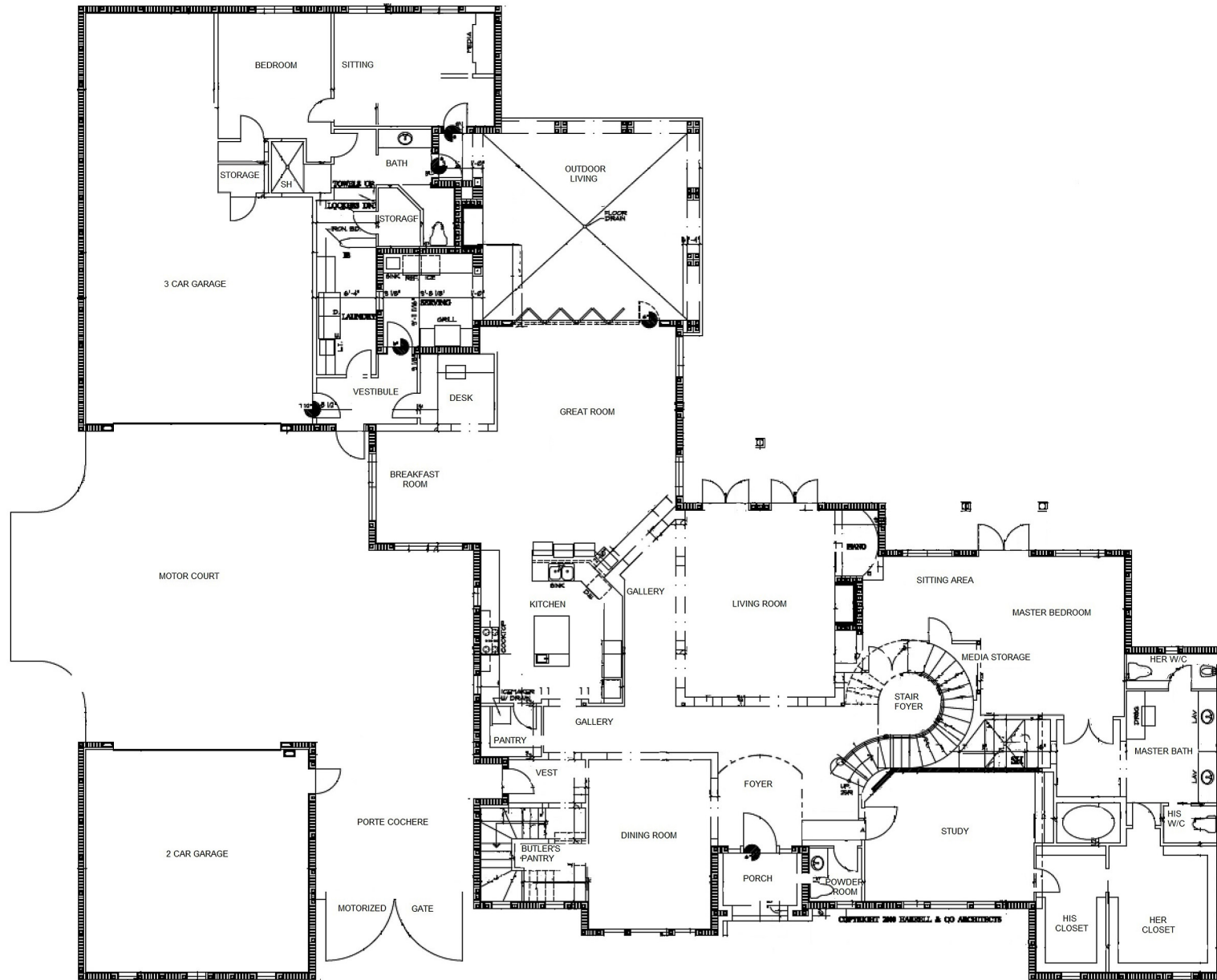


15315 Corsini Way, Naples, FL 34110 - 1st Floor



CUSTOM RESIDENCE
 MEDITERRA PARCEL 108 SITE 1
 NAPLES, FLORIDA
 PERMIT DOCS. JAN. 16, 2011



HARRELL & CO ARCHITECTS
 2741 EAST TAMiami TRAIL • SUITE 4 • NAPLES FL 34102 • A40002700 • (941)435-1250

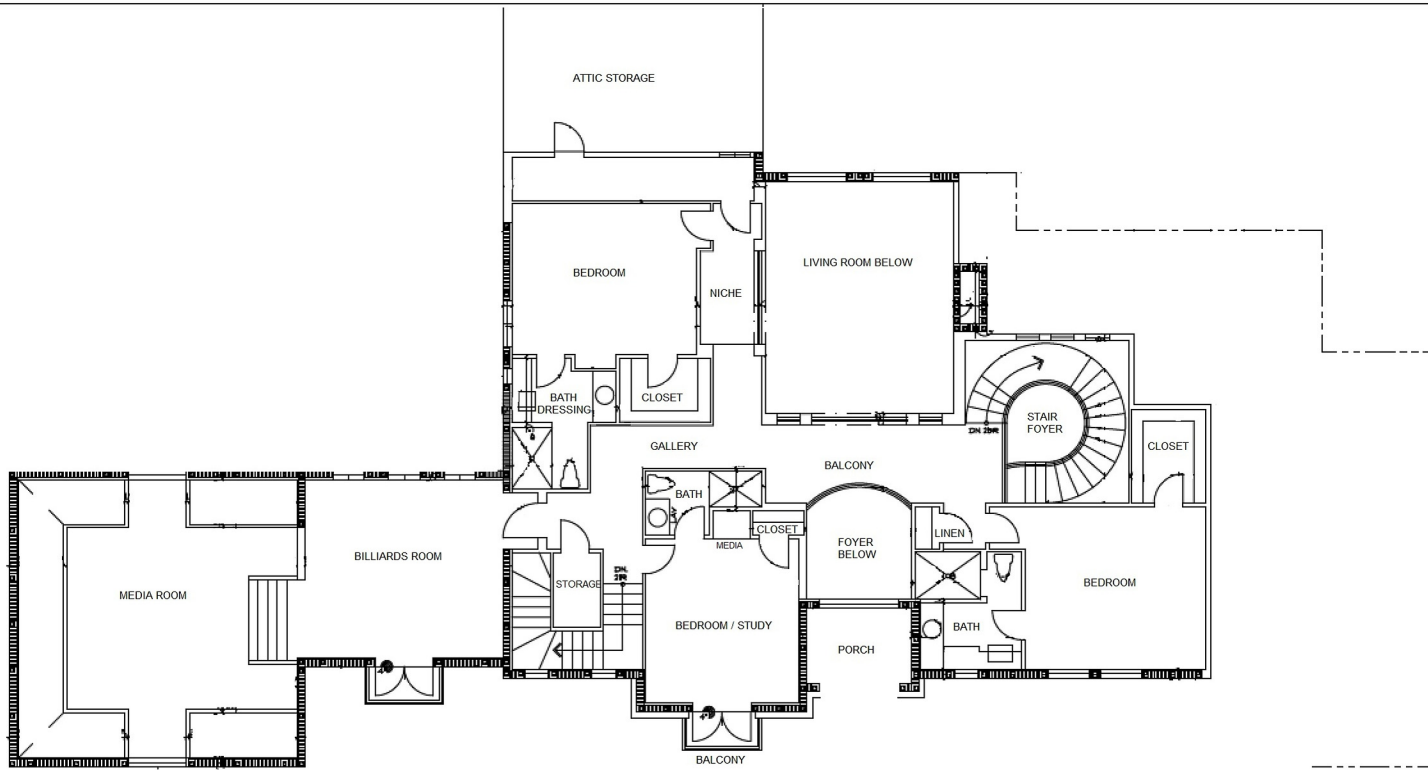


FIRST FLOOR PLAN
 SCALE: 1/4"=1'-0"

© HARRELL & CO ARCHITECTS

"This information including, but not limited to, any information about the size or area of lots, structures, or living space such as room dimensions, square footage calculations, or acreage is believed to be accurate, but is not warranted or guaranteed. This information should be independently verified before any person enters into a transaction based upon it. David William Auston, PA shall not be liable for any information contained herein including, but not limited to direct, indirect, special, incidental, punitive, consequential damages or any damages arising out of or in any way connected with the use of information contained herein."

15315 Corsini Way, Naples, FL 34110 - 2nd Floor



CUSTOM RESIDENCE
MEDTERRA PARCEL 108 SITE 1
NAPLES, FLORIDA
PERMIT DOCS. JAN. 16, 2011



HARRELL & CO ARCHITECTS
2341 EAST TAMiami TRAIL • SUITE 4 • NAPLES FL 34102 • AA000270 • (941) 435-1250

SECOND FLOOR PLAN
SCALE: 1/4" = 1'-0"



"This information including, but not limited to, any information about the size or area of lots, structures, or living space such as room dimensions, square footage calculations, or acreage is believed to be accurate, but is not warranted or guaranteed. This information should be independently verified before any person enters into a transaction based upon it. David William Auston, PA shall not be liable for any information contained herein including, but not limited to direct, indirect, special, incidental, punitive, consequential damages or any damages arising out of or in any way connected with the use of information contained herein."