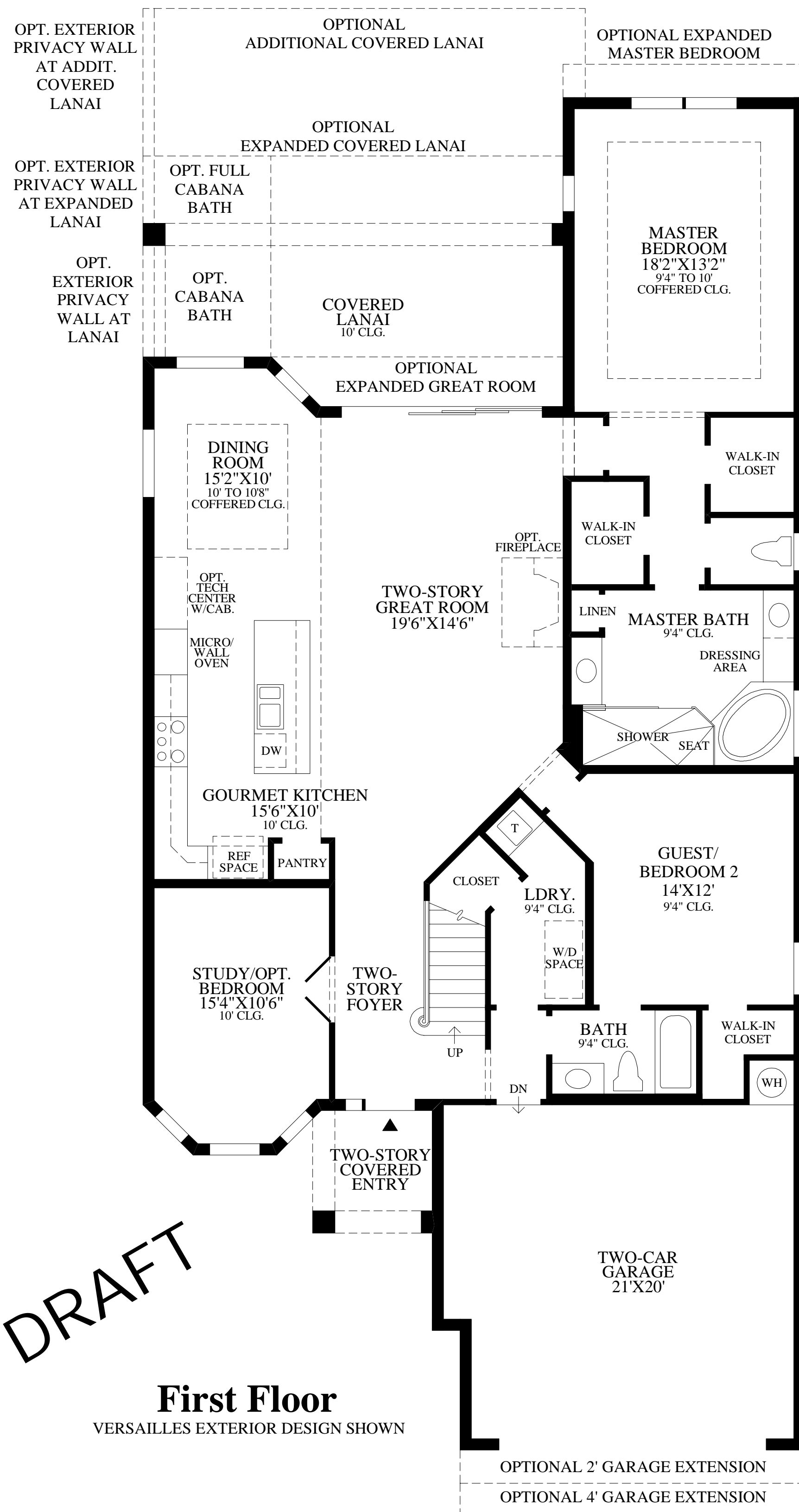


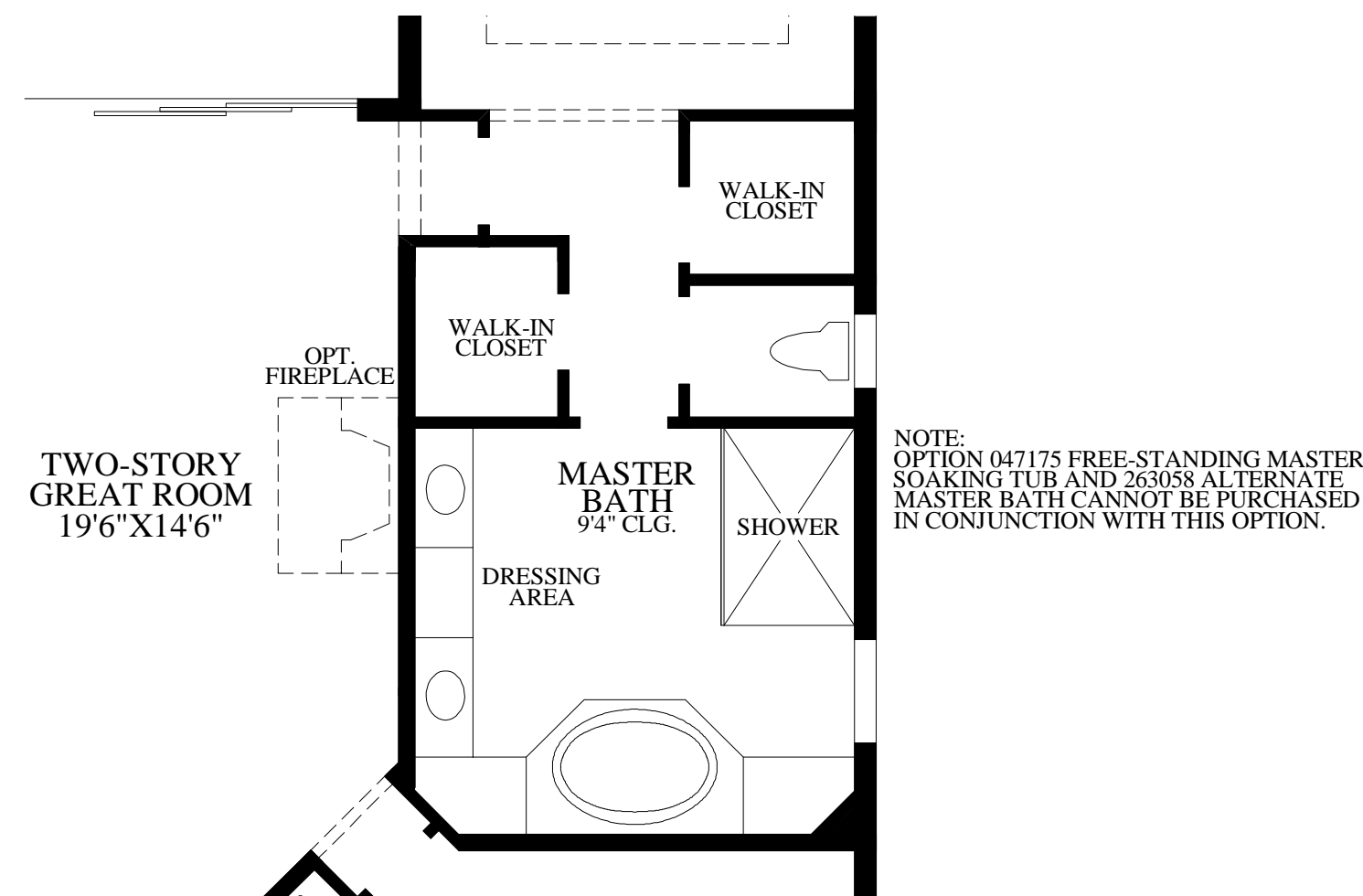
DRAFT



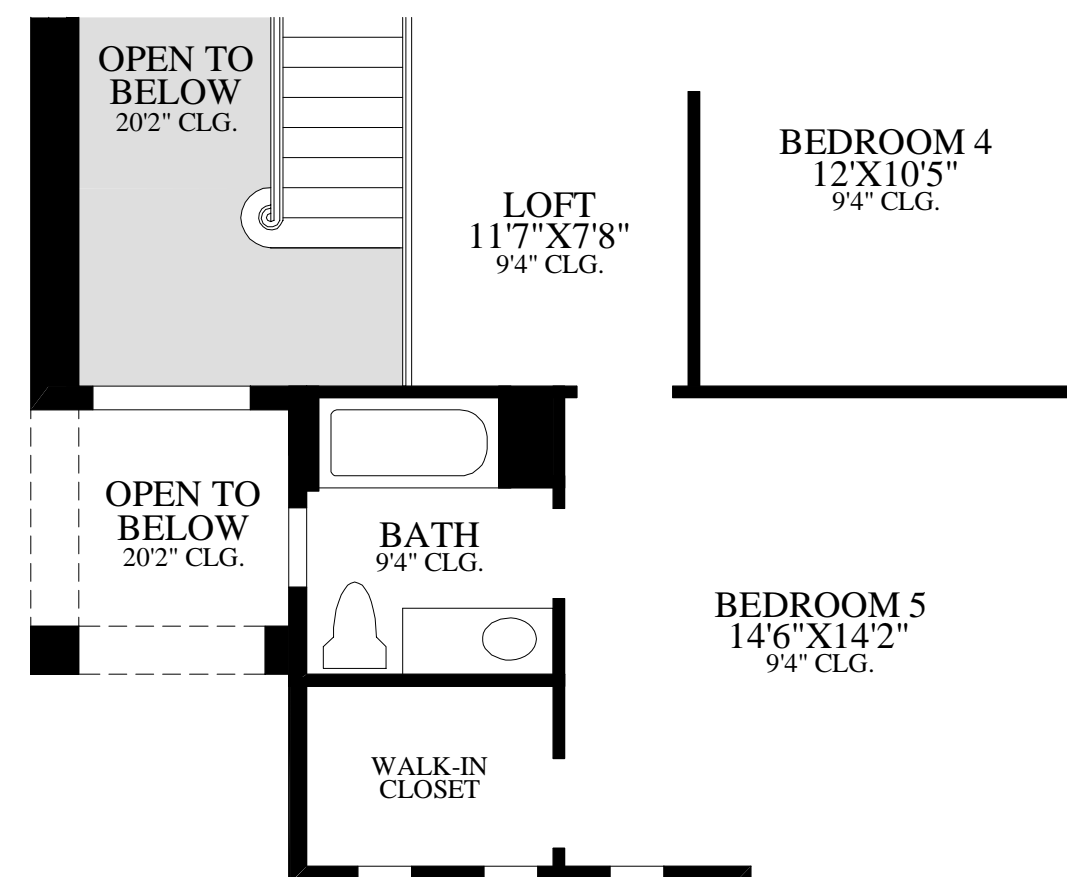
DRAFT

## First Floor

VERSAILLES EXTERIOR DESIGN SHOWN

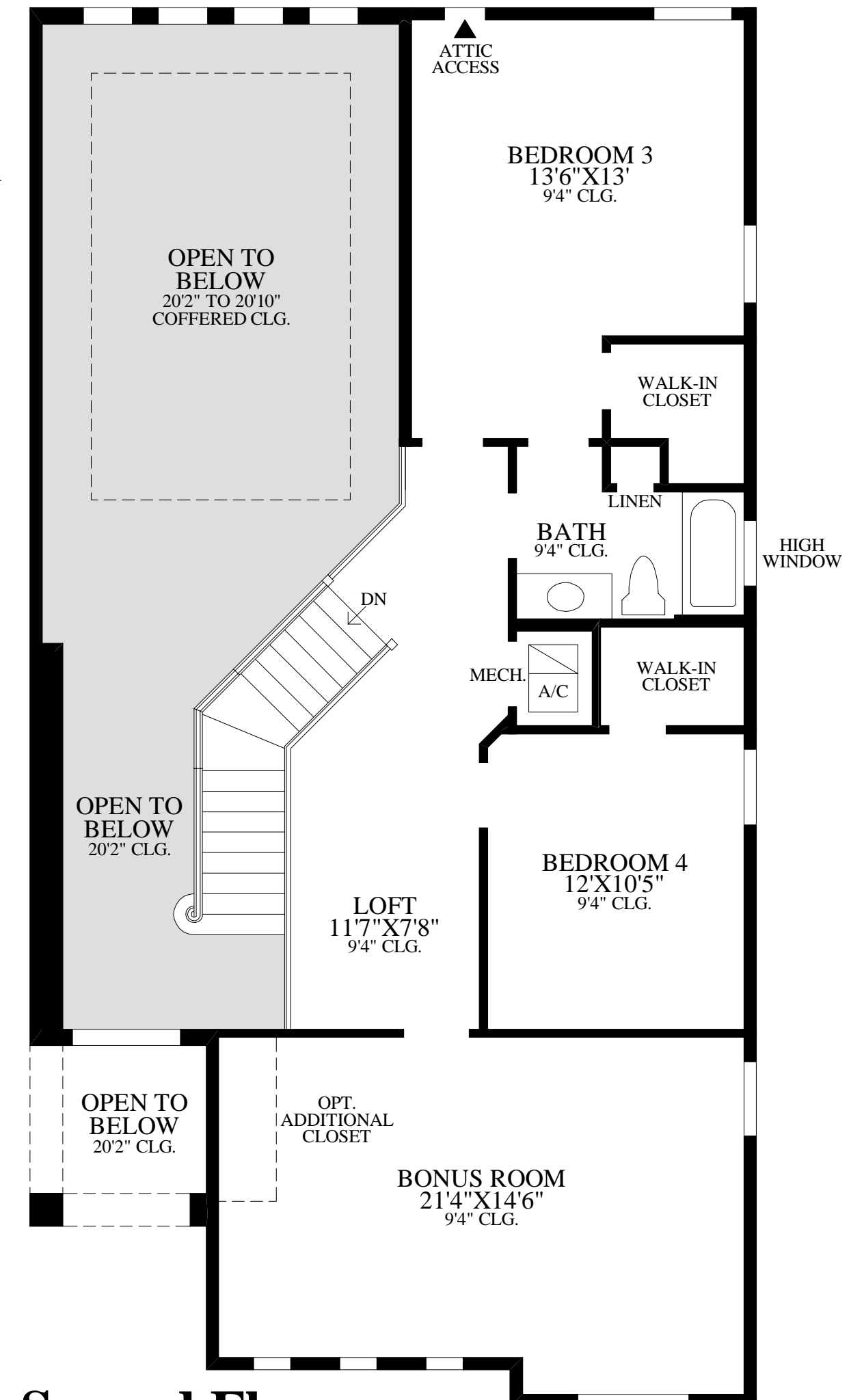


SHOWN WITH  
OPTIONAL EXPANDED MASTER BATH



NOTE:  
OPTION 263133 ADDITIONAL  
CLOSET WITH BI-PASS DOORS  
AND 367 ADDITIONAL BATH  
CANNOT BE PURCHASED IN  
CONJUNCTION WITH THIS OPTION

SHOWN WITH  
OPTIONAL FIFTH BEDROOM



## Second Floor

- The two-story foyer of this home offers direct access to the study with double-doors as well as stunning views of the gracefully turned stairs.
- This ideal space for entertaining and family gatherings includes an expansive two-story great room with direct access to the covered lanai, a kitchen with a large center island, and an adjacent dining room.
- The master bedroom includes two walk-in closets and a private bathroom with dual vanities, a corner tub, a separate shower with seat, and a private water closet.

First Floor	1960 sq. ft.
Second Floor	986 sq. ft.
Air Conditioned Living Area	2946 sq. ft.
Covered Lanai	257 sq. ft.
Covered Entry	52 sq. ft.



## GREAT ROOM