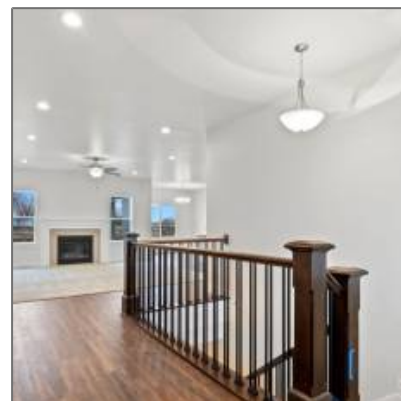


# Quality built home with a great floorplan!

3,818 Sqft - 5258 N Maplewood Ln, Stansbury Park, Utah, United States



## Basic Details

Property Type:	<b>Residential</b>
Listing Type:	<b>For Sale</b>
Listing ID:	<b>587718</b>
Ref ID:	<b>2697900</b>
Price:	<b>\$519,900</b>
Bedrooms:	<b>6</b>
Bathrooms:	<b>3</b>
Square Footage:	<b>3,818 Sqft</b>
Lot Area:	<b>0.30 Sqft</b>
MLS:	<b>1647395</b>

## Address Map

Location Text:	<b>5258 N Maplewood Ln, Stansbury Park, Utah, United States</b>
Country:	<b>USA</b>
State:	<b>UT</b>
City:	<b>Stansbury Park</b>
Street:	<b>5258 N Maplewood Ln</b>
Postal Code:	<b>84074</b>
Longitude:	<b>W113° 41' 37.4"</b>
Latitude:	<b>N40° 37' 28.9"</b>

## Agent Info



Todd Johnson

[View Website](#)

[801-871-9162](tel:801-871-9162)

---