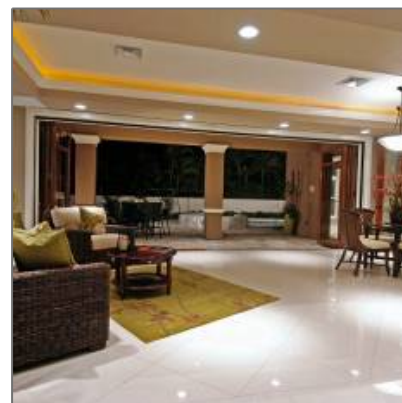
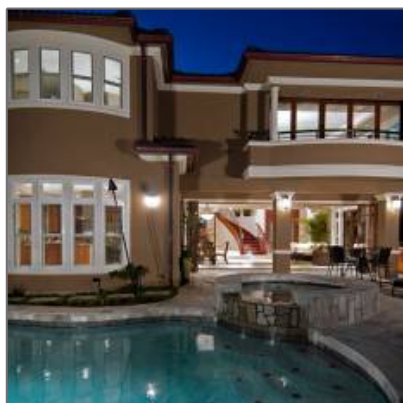


# Beautiful, new contemporary home

3,193 Sqft - 4767 Kahala Ave., Honolulu, Hawaii  
96816, United States



## Basic Details

Property Type:	<b>Residential</b>
Listing Type:	<b>For Sale</b>
Listing ID:	<b>306851</b>
Ref ID:	<b>4111376</b>
Price:	<b>\$3,550,000</b>
Bedrooms:	<b>4</b>
Bathrooms:	<b>4</b>
Square Footage:	<b>3,193 Sqft</b>
MLS:	<b>201804057</b>

## Address Map

Location Text:	<b>4767 Kahala Ave., Honolulu, Hawaii 96816, United States</b>
Country:	<b>USA</b>
State:	<b>HI</b>
City:	<b>Honolulu</b>
Zipcode:	<b>96816</b>
Street:	<b>4767 Kahala Ave.</b>
Postal Code:	<b>96816</b>
Longitude:	<b>W158° 13' 11.2"</b>
Latitude:	<b>N21° 16' 2"</b>

## Agent Info

Beth Chang

<http://www.bethchang.com>

(808)478-7800

UNIQUE HOMES<sup>®</sup>  
THE WORLD OF LUXURY REAL ESTATE  
AGENT NETWORK

---